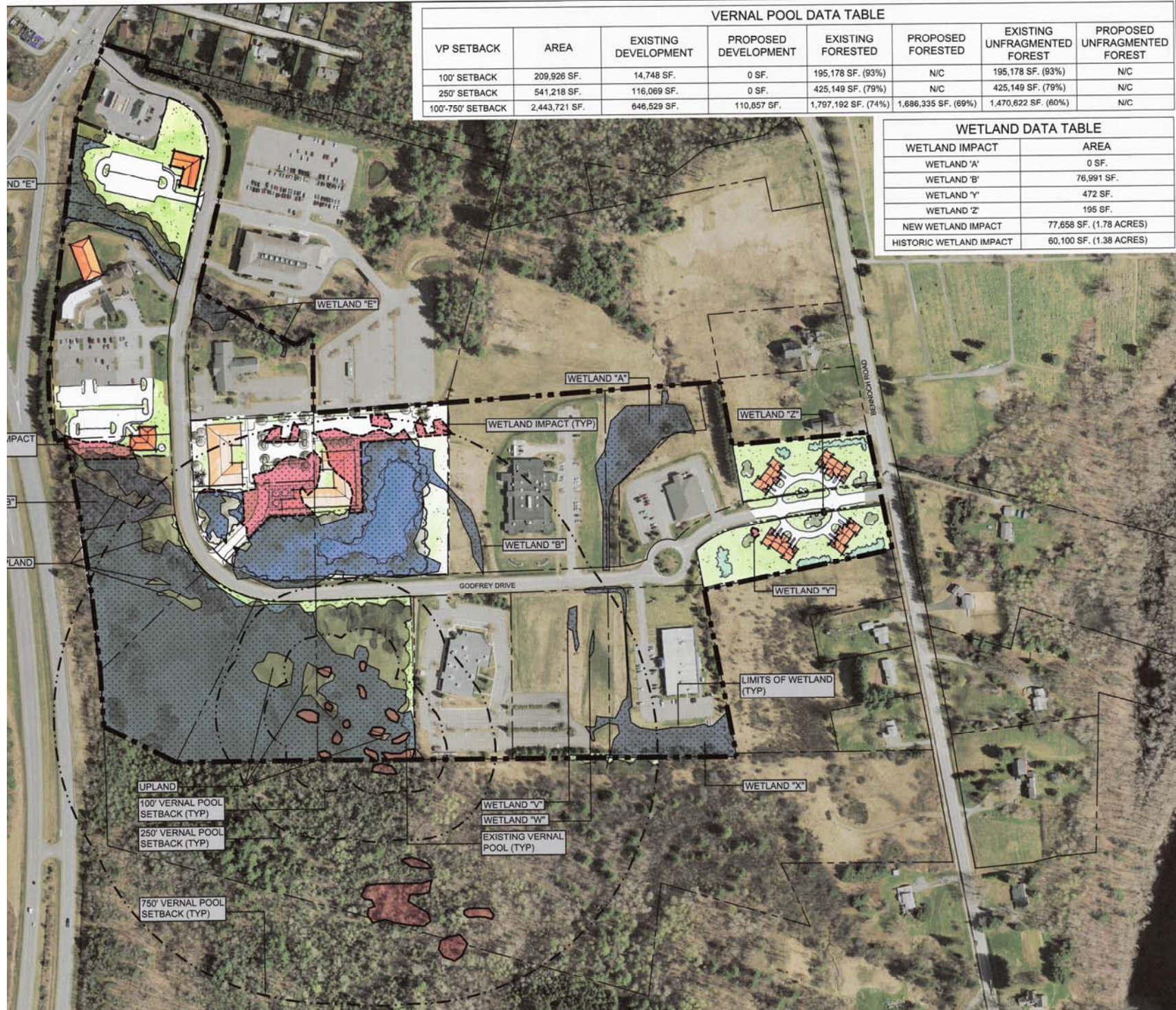


VP SETBACK	AREA	EXISTING DEVELOPMENT	PROPOSED DEVELOPMENT	EXISTING FORESTED	PROPOSED FORESTED	EXISTING UNFRAGMENTED FOREST	PROPOSED UNFRAGMENTED FOREST
100' SETBACK	209,926 SF.	14,748 SF.	0 SF.	195,178 SF. (93%)	N/C	195,178 SF. (93%)	N/C
250' SETBACK	541,218 SF.	116,069 SF.	0 SF.	425,149 SF. (79%)	N/C	425,149 SF. (79%)	N/C
100'-750' SETBACK	2,443,721 SF.	646,529 SF.	110,657 SF.	1,797,192 SF. (74%)	1,686,335 SF. (69%)	1,470,622 SF. (60%)	N/C

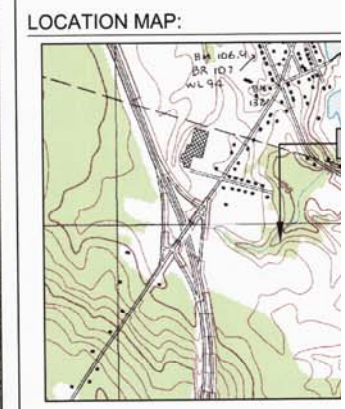
WETLAND IMPACT	AREA
WETLAND 'A'	0 SF.
WETLAND 'B'	76,991 SF.
WETLAND 'Y'	472 SF.
WETLAND 'Z'	195 SF.
NEW WETLAND IMPACT	77,658 SF. (1.78 ACRES)
HISTORIC WETLAND IMPACT	60,100 SF. (1.38 ACRES)



- SHEET NOTES:**
- BOUNDARY INFORMATION SHOWN IS BASED ON A SURVEY MAP PROVIDED BY JAMES W. SEWALL COMPANY DATED: JUNE 8, 1985
  - WETLAND INFORMATION & LABELING SHOWN IS BASED ON A WETLAND DELINEATION MAP PROVIDED BY S.W. COLE ENGINEERS & A PROTECTED NATURAL RESOURCES PLAN BY BURI COMPANY, LLC. DATED: 09/22/16
  - AIR PHOTO PROVIDED BY MAINE STATE GIS, TAKEN 2012
  - VERNAL POOL INFORMATION PROVIDED BY THE TOPOGRAPHIC MAP DATED: 2012

**LEGEND**

- WETLANDS
- VERNAL POOL
- PROPERTY LINES
- WETLAND IMPACT



**WBRC PROJECT #**

GRAPHIC SCALE